



Tölfræði um áfangapróf

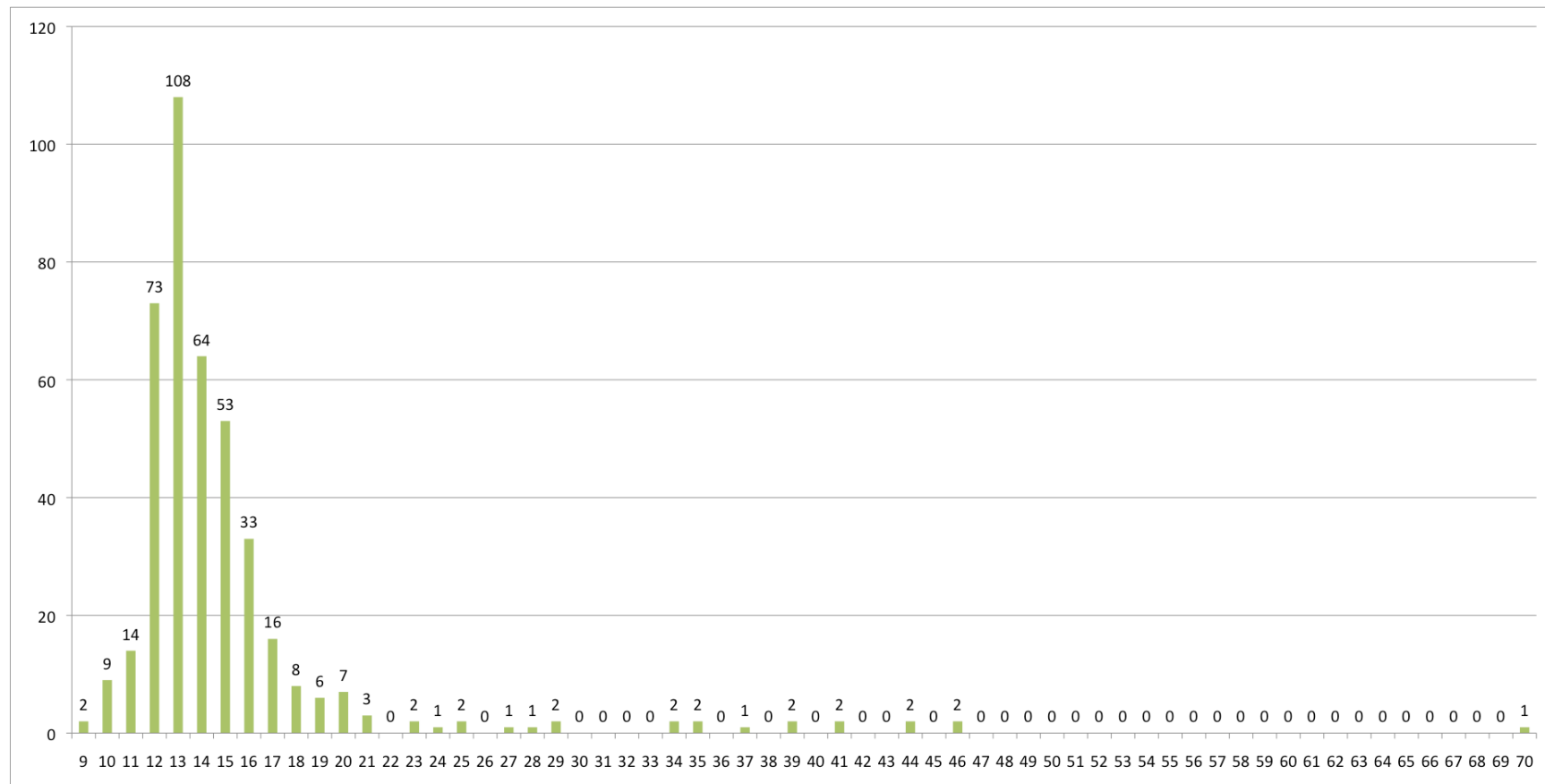
Samanburður

2013-2014 og 2014-2015

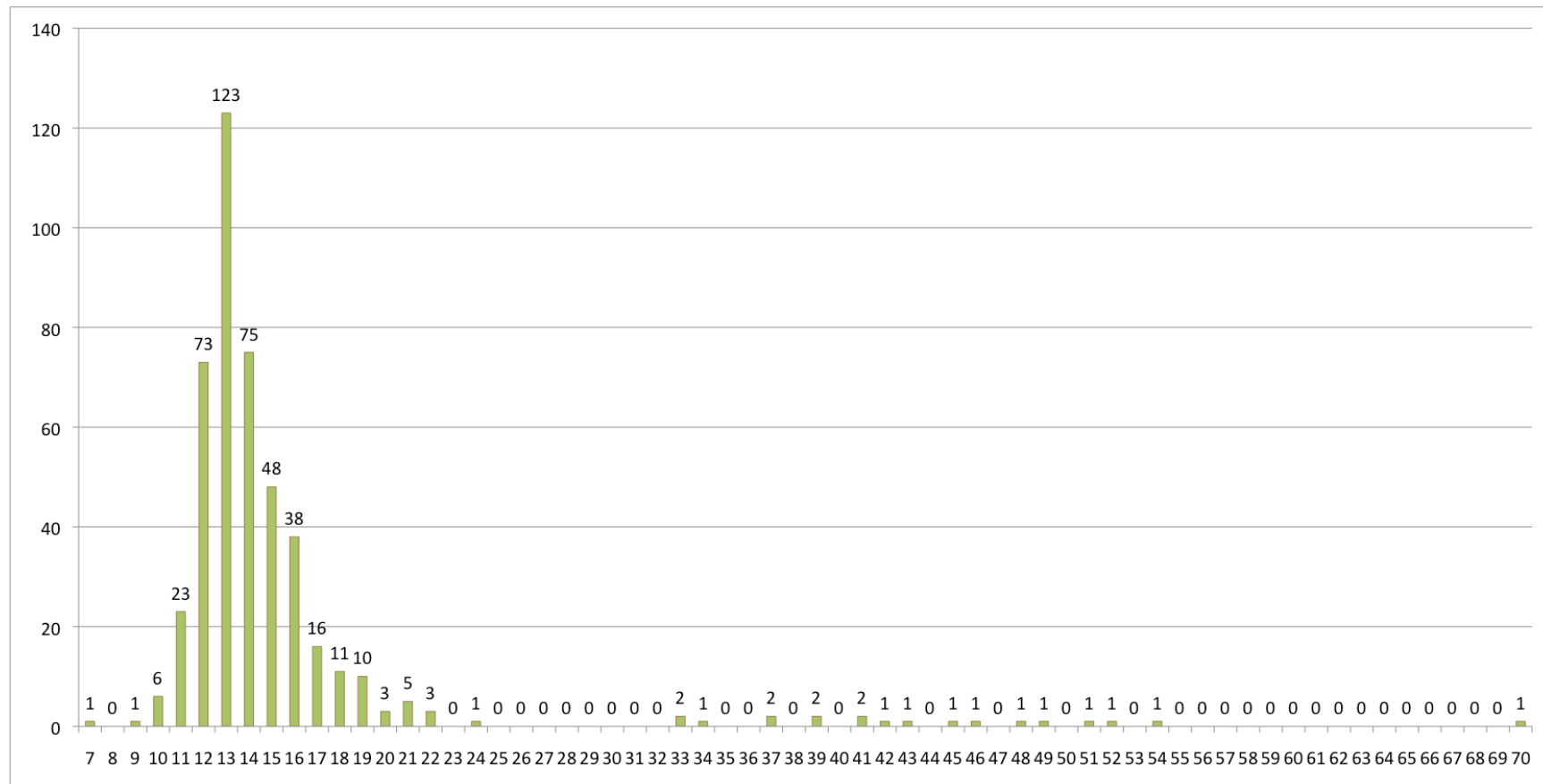
Fjöldi prófa

| | 2014-2015 | 2013-2014 |
|------------------------------------|-----------|-----------|
| Klassísk grunnpróf | 419 | 456 |
| Klassísk miðpróf | 166 | 182 |
| Klassísk framhaldspróf | 44 | 56 |
| Klassískir framhaldsprófstónleikar | 47 | 61 |
| Rytmísk grunnpróf | 61 | 74 |
| Rytmísk miðpróf | 26 | 39 |
| Rytmísk framhaldspróf | 18 | 21 |
| Rytmískir framhaldsprófstónleikar | 17 | 18 |
| Miðpróf í tónfræðagreinum | 219 | 236 |
| Samtals | 1017 | 1140 |

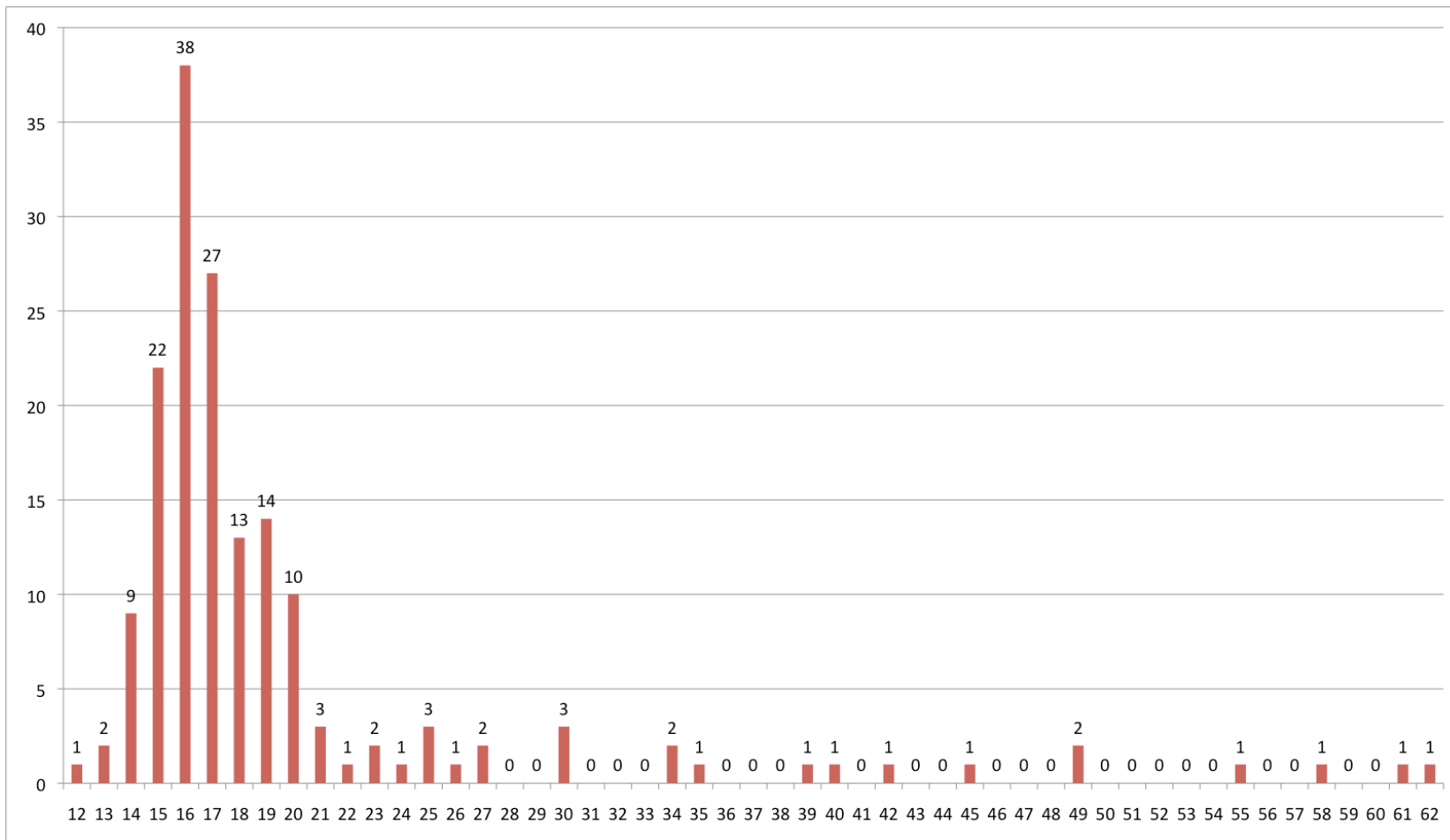
Aldursdreifing – grunnpróf 2014-2015



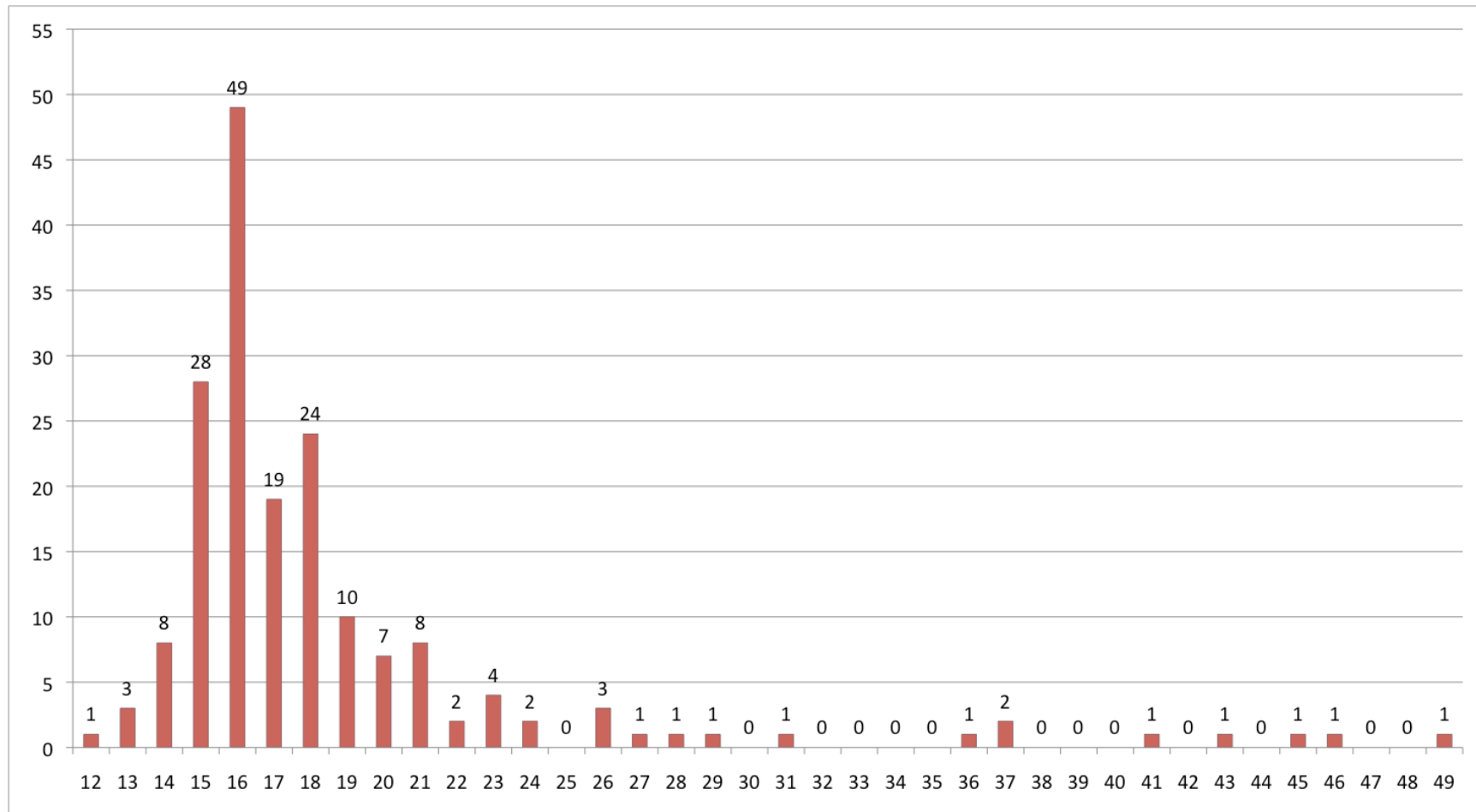
Aldursdreifing – grunnpróf 2013-2014



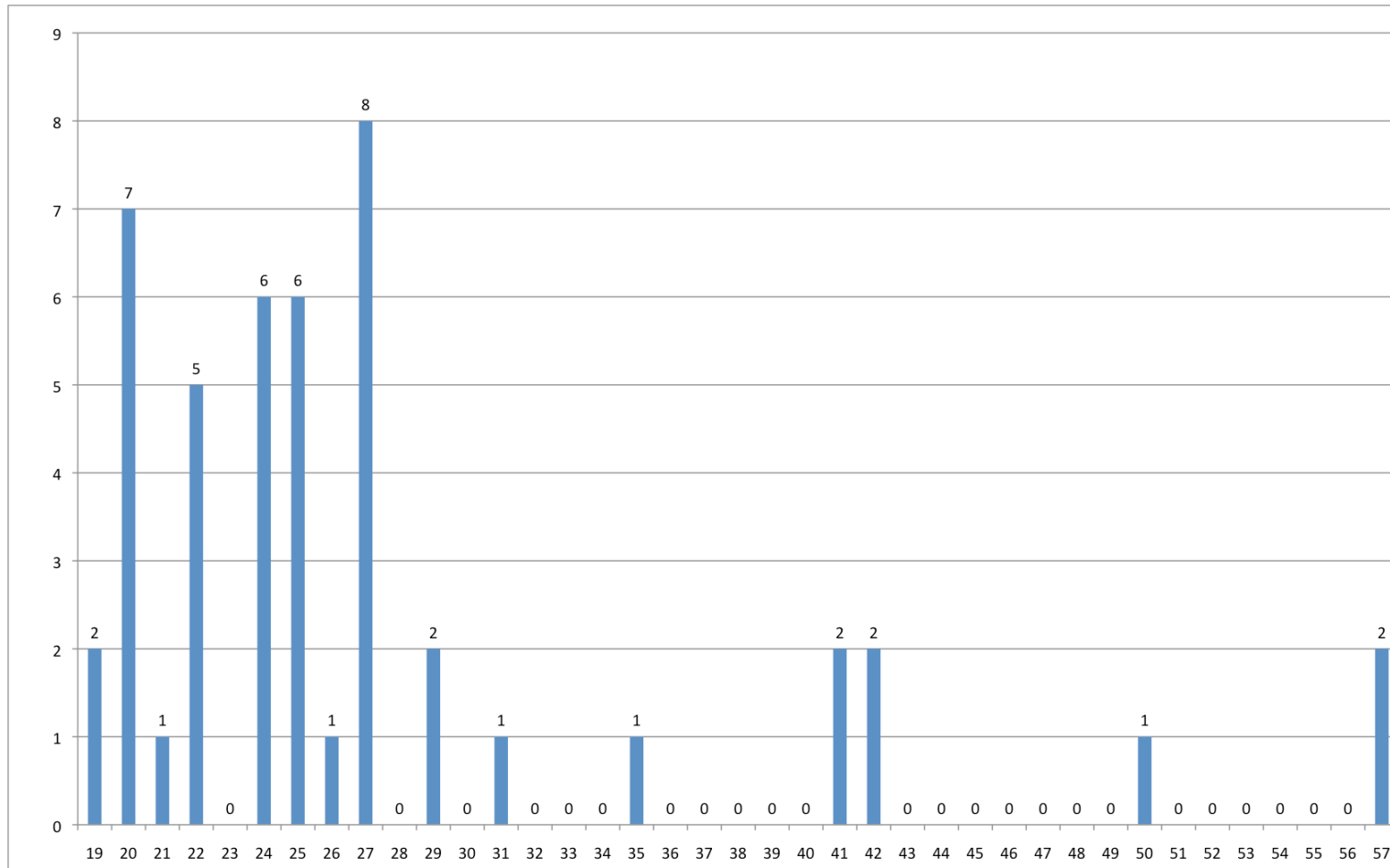
Aldursdreifing – miðpróf 2014-2015



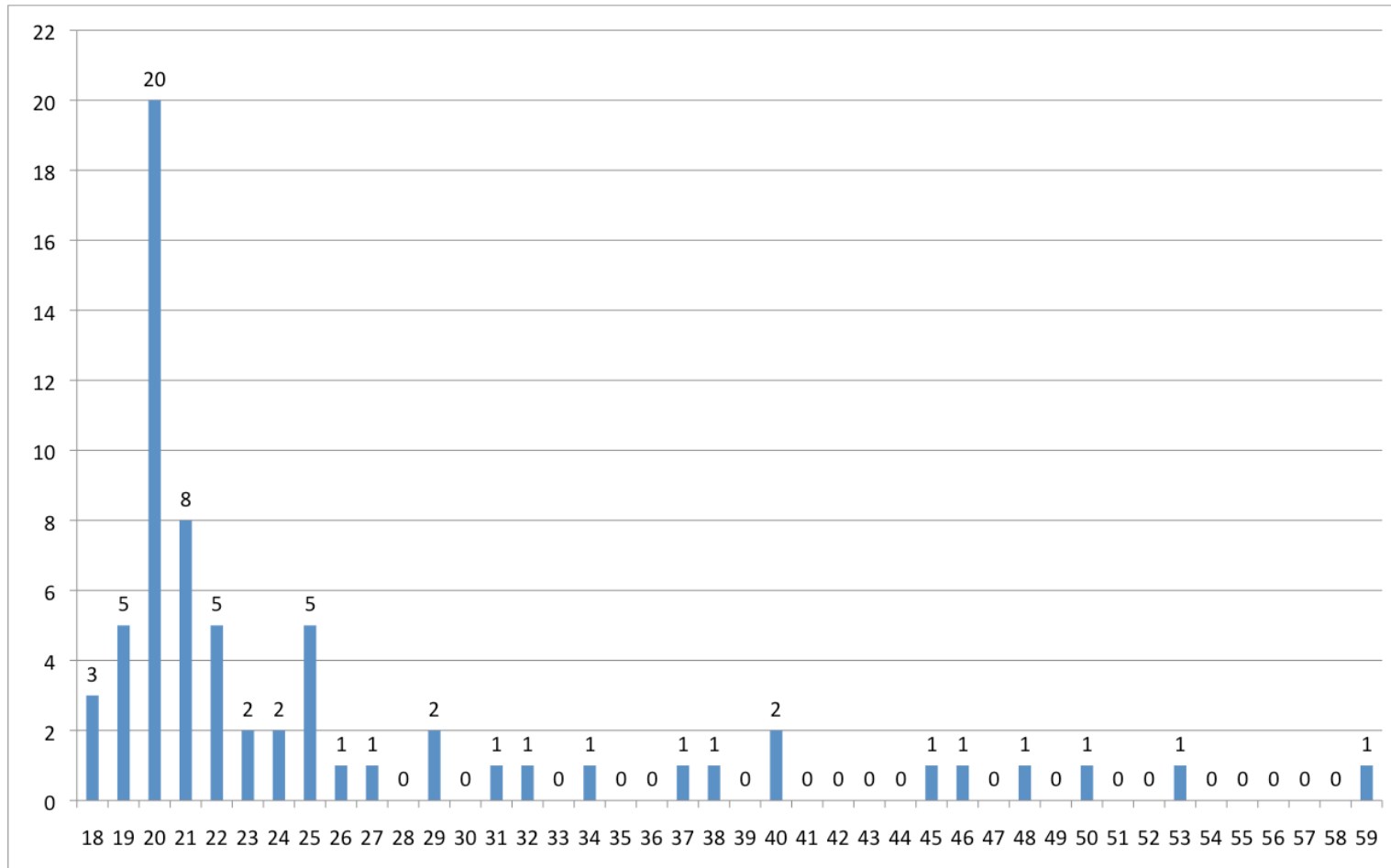
Aldursdreifing – miðpróf 2013-2014



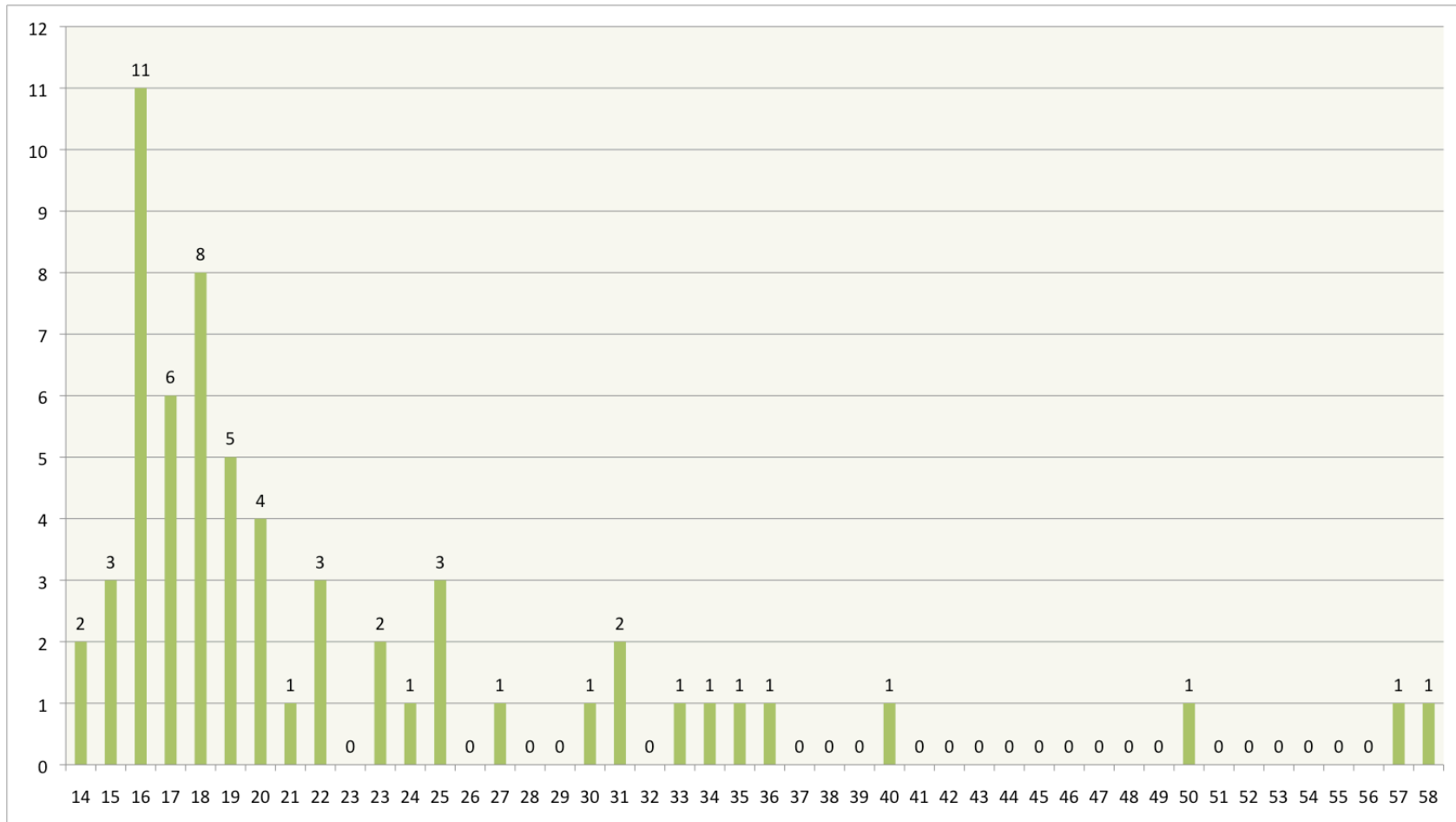
Aldursdreifing – framhaldspróf 2014-2015



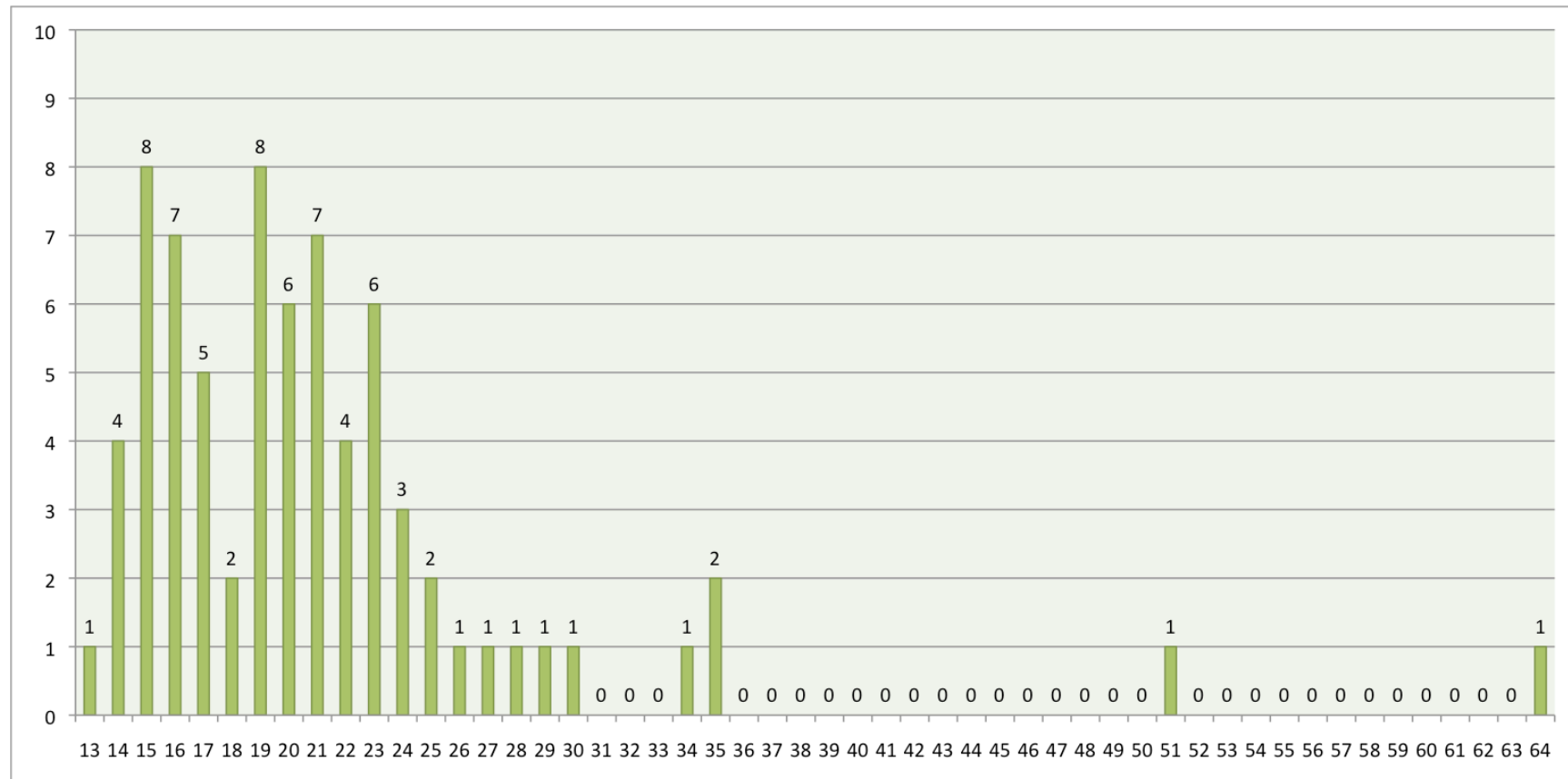
Aldursdreifing – framhaldspróf 2013-2014



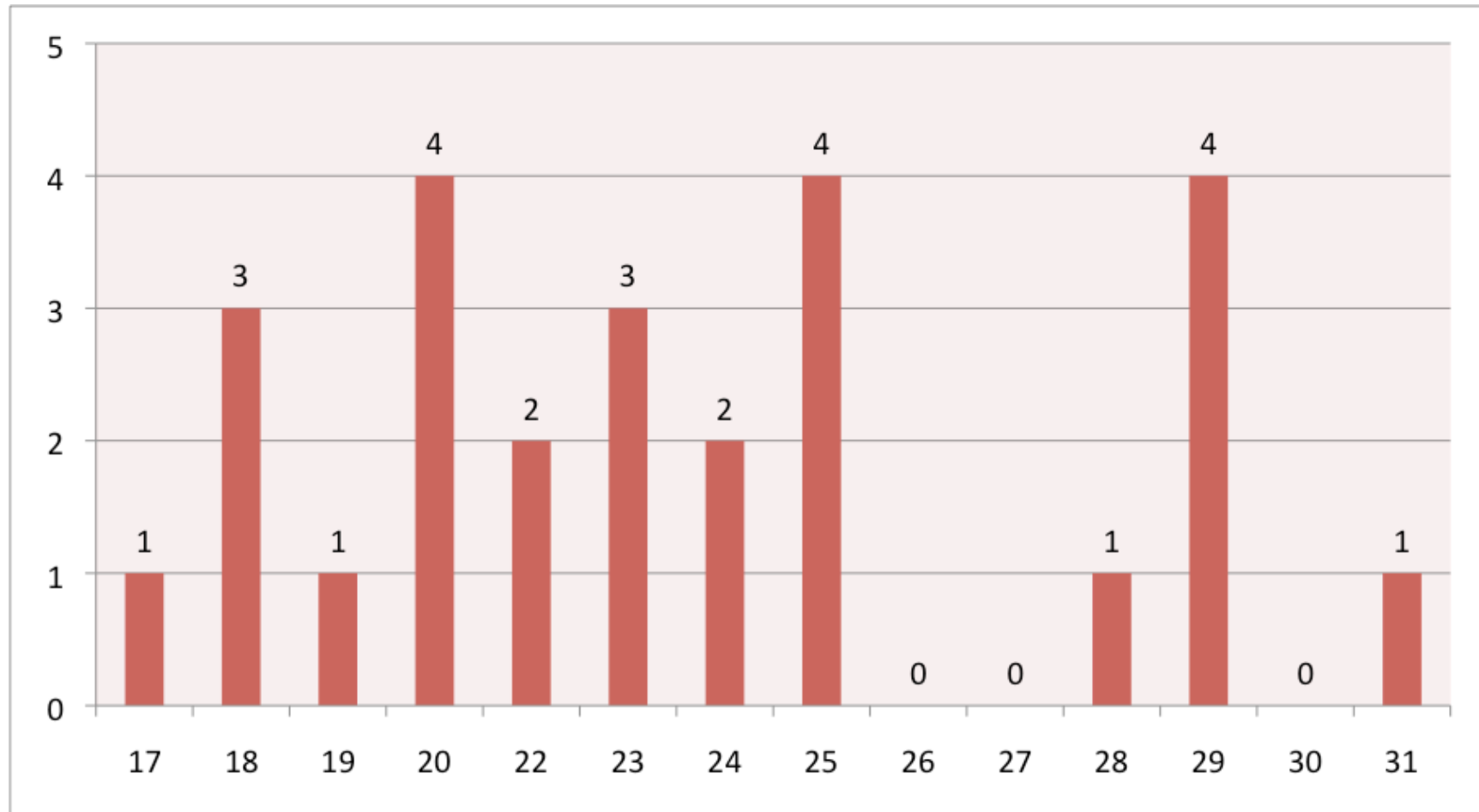
Aldursdreifing – rytmísk grunnpróf 2014-2015



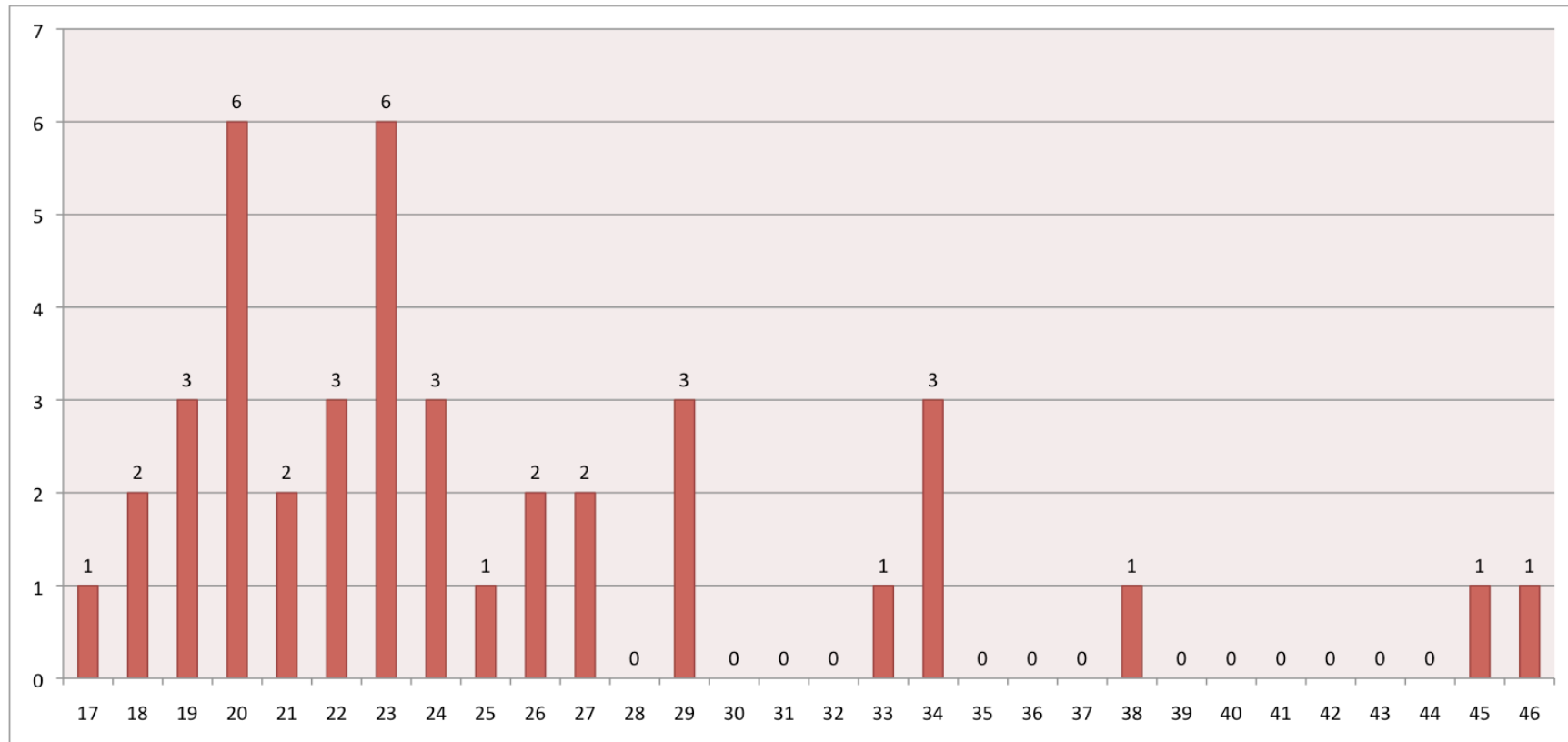
Aldursdreifing – rytmísk grunnpróf 2013-2014



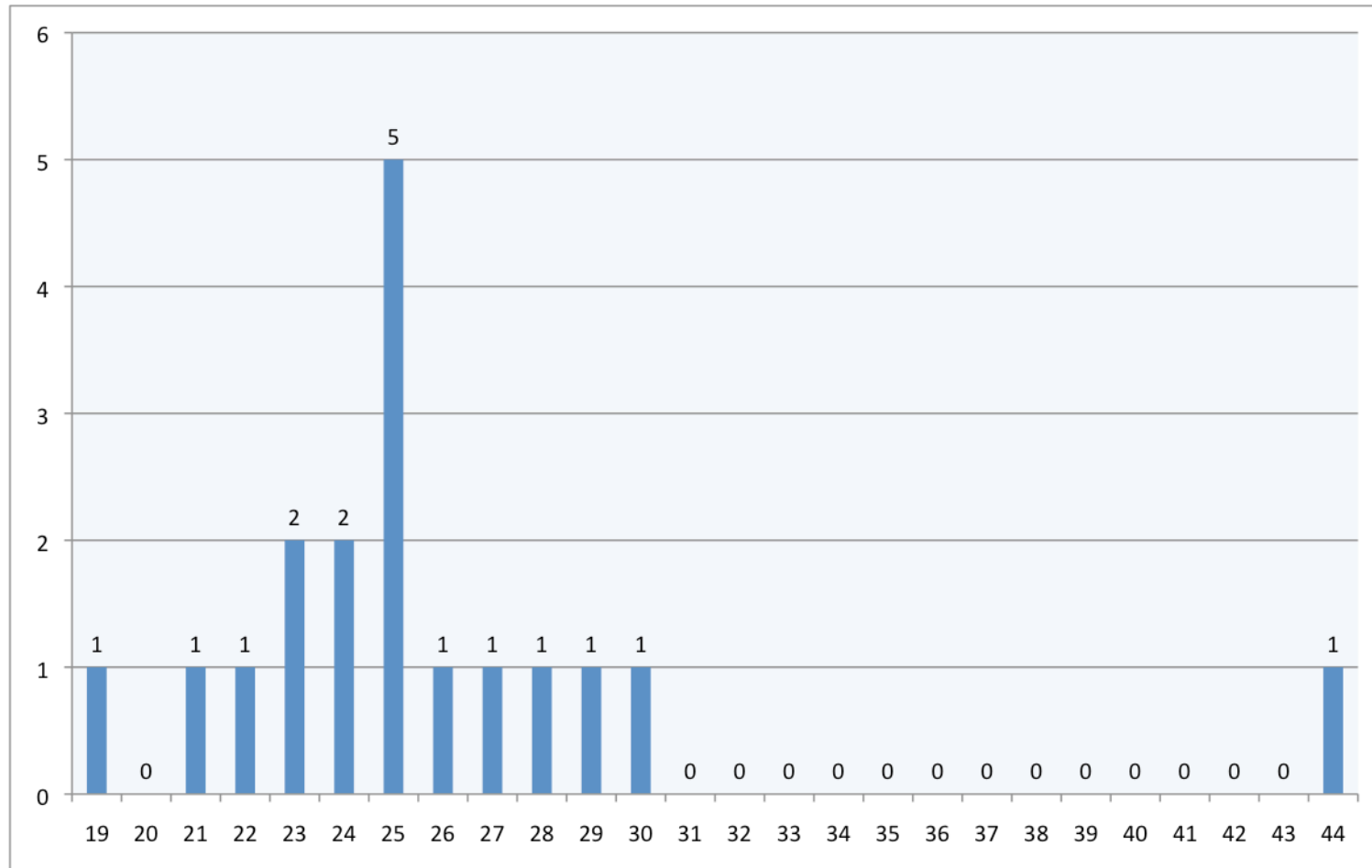
Aldursdreifing – rytmísk miðpróf 2014-2015



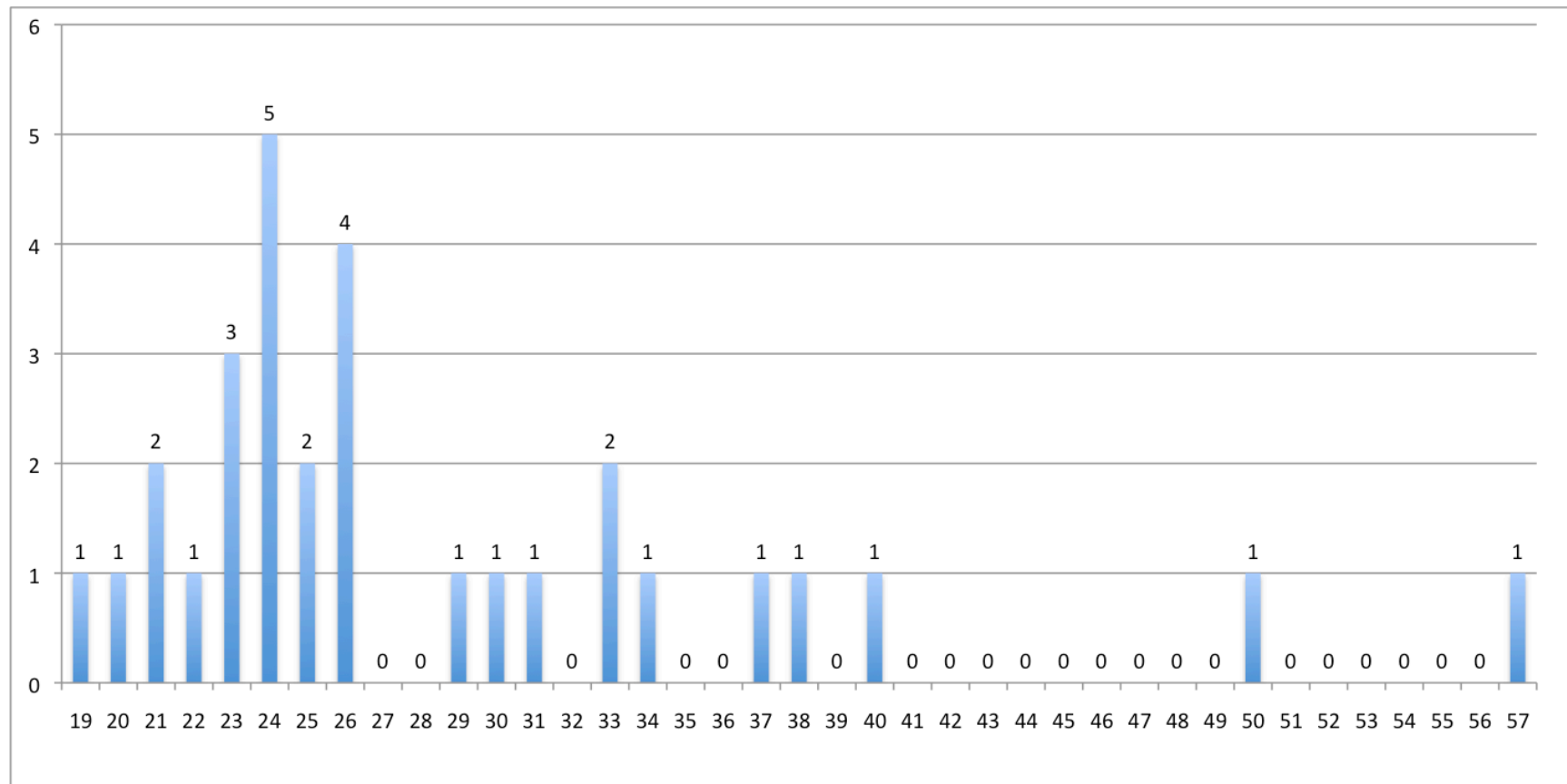
Aldursdreifing – rytmísk miðpróf 2013-2014



Aldursdreifing – rytmísk framhaldspróf 2014-2015



Aldursdreifing – rytmísk framhaldspróf 2013-2014



Meðalaldur próftaka

| | Hljóðf.nem. 2014-2015 | Söngvarar 2014-2015 | Allir 2014-2015 | Hljóðf.nem. 2013-2014 | Söngvarar 2013-2014 | Allir 2013-2014 |
|--------------------------|--------------------------|------------------------|--------------------|--------------------------|------------------------|--------------------|
| Grunnpróf | 13.74 | 24.93 | 15.06 | 14.25 | 23.27 | 15.20 |
| Miðpróf | 17.72 | 30.93 | 19.87 | 17.17 | 27.21 | 18.51 |
| Framhaldspróf | 26.16 | 31.00 | 27.48 | 21.73 | 35.82 | 25.52 |
| | | | | | | |
| Rytmísk grunnpróf | | | 22.36 | | | 21.14 |
| Rytmísk miðpróf | | | 23.31 | | | 25.12 |
| Rytmísk framhaldspróf | | | 25.83 | | | 28.60 |

Niðurstöður prófa 2014-2015

| | Meðaleinkunn | Lægsta einkunn | Hæsta einkunn | Miðgildi |
|--------------------|--------------|----------------|---------------|----------|
| Grunnpróf | 8.73 | 6.0 | 9.9 | 8.8 |
| Miðpróf | 8.50 | 6.6 | 9.8 | 8.55 |
| Framhaldspróf | 8.58 | 7 | 9.5 | 8.65 |
| | | | | |
| Rytm.grunnpróf | 8.49 | 5.7 | 9.6 | 8.6 |
| Rytm.miðpróf | 8.83 | 7.8 | 9.8 | 8.9 |
| Rytm.framhaldspróf | 8.56 | 6.3 | 9.6 | 8.7 |

Miðpróf í tónfræðagreinum 2015

- Próftakar voru 219 úr 26 skólum
- Meðaleinkunn var 8.06
- Lægsta einkunn var 4.1
- Hæsta einkunn var 9.8
- Miðgildi var 8.2